

INTERNATIONAL MASTER OF PUBLIC HEALTH PROGRAM

October, 2015 - September, 2016

Dear Potential MPH Student,

As the first and largest school of public health in Israel, the Braun School of Public Health and Community Medicine at Hebrew University-Hadassah has 50 years of experience in training public health professionals from Israel and from 90 countries across the globe. Our MPH degree has been awarded to more than 800 graduates from developing and transition regions as well as developed countries of North America and Western Europe since 1960, and a similar number of Israelis.

The International Master of Public Health (IMPH) Program offers a scientifically stimulating and culturally rewarding experience of studying in a foreign country and interacting with peers from different professional and cultural backgrounds, in the unique setting of Jerusalem. In his book *A Beggar in Jerusalem*, Nobel Prize Laureate Elie Weisel wrote "*Jerusalem: The city which miraculously transforms man into pilgrim; no one can enter it and go away unchanged*".

The one-year English-language IMPH Program provides its trainees with tools for examining public health problems and formulating relevant responses at the institutional, community and national level. We help our students develop knowledge and skills in a broad range of public health disciplines, thus preparing them to take up key positions as leaders and teachers in their home countries, in areas such as HIV, malaria and tuberculosis prevention and control, prevention and treatment of heart disease, diabetes and other non-communicable diseases, combating malnutrition and tobacco use, and fighting the stigma associated with mental illness. An equally important goal of the IMPH Program is to instill in our students a love and respect for the Land of Israel and its people.

The teachers and staff of the IMPH will do their utmost to make you feel at home while you undertake this demanding, yet very rewarding curriculum of study.

Acceptance into the Program is competitive, but selected applicants from developing and transition regions are offered generous scholarships that cover the costs of studying in the Program. Exceptional candidates can compete for a travel award.

In the next few pages you will get a glimpse of what the IMPH experience in Jerusalem entails, academically and socially-culturally. If, when you finish reading this brochure, you feel that our IMPH Program is what you are looking for, we encourage you to complete the application package, and allow us to consider you for this unique public health training experience.

Professor Yehuda Neumark
Head,
Braun School of Public Health
and Community Medicine

Professor Ora Paltiel
Director,
International MPH Program

The International Master of Public Health Program

Introduction

The Hebrew University-Hadassah Braun School of Public Health and Community Medicine is proud of its overseas students who since 1970 have made the International Master of Public Health (IMPH) Program a most rewarding and successful venture. More than 800 students from some 90 countries have participated in this unique experience.

Our students' wide range of cultural backgrounds and work experiences coupled with our demanding curriculum create an environment which is at once scientifically challenging and culturally stimulating. Personal contacts with our alumni and news of their contributions to their countries' health is a continuing source of pride and pleasure.

The IMPH student body comprises physicians, nurses, other health professionals, economists and those interested in public health from other disciplines. Our graduates return home at the completion of their training to occupy key positions in the health care systems of their communities and countries.

Most students come from developing regions of the world, but the program also welcomes students from the west, and our alumni include graduates from Western Europe, the USA and Canada.

Israel's Agency for International Development Cooperation (MASHAV) has been a vital element in the development and continuation of this unique program for over 30 years.

A limited number of scholarships are provided annually by the Pears Foundation, Hadassah Medical Organization, British Friends of Hebrew University and American Friends of Hebrew University, MASHAV and other donors for selected candidates from developing regions and countries in transition.

Israel is known to be a welcoming society and along with providing you with public health knowledge and skills, we will be happy to show you many of the treasures of Israel and its capital city, Jerusalem.

Surrounded by terraced slopes and pine forested hills west of central Jerusalem, our campus lies next to the quiet, picturesque village of Ein Kerem. Students can wander along flower-lined paths, interspersed with vines and olive trees and watch artists at work. Quaint shops, restaurants and galleries dot the landscape. On campus, one of the first sights to greet newcomers is the magnificent set of stained glass windows created by Marc Chagall.



Join us and become part of our world-wide family devoted to the advancement of public health practices, research, and teaching.

The field of public health has been defined as "prevention of diseases, prolonging life and promoting health" (WHO, Regional Office Europe, 1994), spans numerous disciplines such as epidemiology, health administration, health promotion, nutrition, and environmental health.

Community Medicine, another cornerstone of our approach to public health, is concerned with the care of the community as a whole and of its subgroups. Toward this goal, the planning of community health programs requires an assessment of the health needs at the population level. As stated by the late Professor Sidney Kark, one of the founding fathers of our School, *"Diagnosis of the state of health of a community is as important a foundation of community medicine and community health care in general, as is careful diagnosis of the state of health of an individual patient seeking care"*.

The Unique Advantages of the Braun School's IMPH Program in Israel

- The program promotes excellence in international public health research and practice in a broad range of topics.
- The School has nearly 50 years experience in the international health field, its teaching in Israel and in many other countries.
- In recognition of our ongoing public health training efforts in Israel and abroad, the World Health Organization designated the School as a Collaborating Centre for Capacity Building in Public Health.
- The IMPH Program is recognized the world over as one of the leading courses in its field as evidenced by the 2003 review of the Association of Schools of Public Health in the European Region (ASPHER) towards regional accreditation.
- The IMPH Program provides tools for examining public health problems in any country and formulating relevant intervention strategies at the community and national level.
- The emphasis throughout is on active learning by the student rather than passive participation in the classroom.
- Israel is both a developed (academically, technologically, etc.) and a still developing young country. We have experienced and struggled with health issues in both these roles.
- Together with the high academic requirements, the program is tailored to the student's needs and interests.
- The teachers are deeply involved, caring and have open communication with their students.
- Small group tutorial classes are provided for students requiring additional assistance in some core courses.
- The IMPH Program offers a wide range of social and cultural activities that serve to bond and integrate the students and introduce them to the historical and modern host country of Israel.

Aims and Objectives of the Course

The overall objective of our Program is to provide basic knowledge of the theory and practice of public health and community medicine for those either currently engaged in this field or planning to do so in the future.

We will work toward helping you develop knowledge and skills in the following areas:

- Principles and uses of epidemiology, research methods, and biostatistics
- Principles of health administration, health economics and health systems
- Evaluation of planning and provision of health services
- Principles of public health practice, planning and administration
- Planning and carrying out research projects
- Diagnosis of the state of health of a community
- Design and implementation of community care programs
- Control of communicable diseases
- Environmental, industrial and occupational health
- Sociological and behavioral factors related to health
- Nutrition in public health, food security, and combating malnutrition

Upon successful completion of the program you will be expected to:

- Initiate and participate in the promotion and development of public health practices in your own country on a national or regional level or in a local community setting
- Develop capacity-building programs responsible for training public health personnel in your country
- Use epidemiological and other tools toward health system planning and evaluation, and health services delivery in geographical regions and within institutions



Study Curriculum

The curriculum of study is comprised of core courses, elective courses, the COPC Workshop, and the writing of a mentored Thesis or Master's Paper.

1. Core Courses

The required courses which constitute the core of the IMPH studies include:

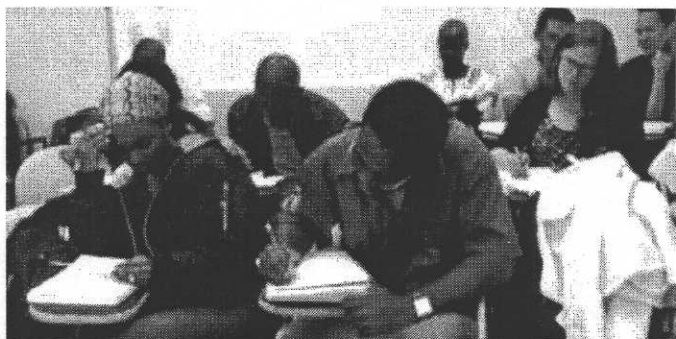
- Basic Statistical Methods for Public Health including Statistical Package for the Social Sciences (SPSS)
- Community Oriented Primary Health Care Workshop
- Control of Communicable Diseases
- Environmental and Occupational Health
- Health Economics
- Interpretation of Epidemiological Data
- Introduction to Health Promotion and Health Behavior
- Introduction to Public Health
- Introduction to Public Health Nutrition
- Organization of Medical Care
- Principles and Uses of Epidemiology
- Public Health Practice, Organization and Evaluation
- Public Health Seminar
- Qualitative Methods in Health and Public Health
- Research Forum
- Sociology of Health and Illness
- Survey and Research Methods



2. Elective Courses

Students also choose from a wide range of elective courses such as:

- Aging: Epidemiology and Services
- Community Mental Health
- Economic Evaluation of Public Health and Medical Interventions
- Family Planning
- Geographic Information Systems (GIS) and Public Health
- Health Promotion
- History of Public Health Epidemiology
- Public Health Demography
- Maternal and Child Health



- Multidisciplinary Aspects of HIV/AIDS
- Public Health Ethics
- Reforms in Health Care Systems
- Risk Approach in Health Services
- Selected Topics in Epidemiology
- Statistical Methods for Analysis of Rates

3. COPC Workshop

A major component of the IMPH program is the Community-Oriented Primary Care (COPC) Workshop. COPC is an innovative approach to health care delivery at the population level that integrates clinical medicine and public health. The COPC model was developed in our School and is employed in communities worldwide.

The main objective of this workshop is to develop community medicine in a primary health care setting or other framework, with special emphasis on the use of epidemiology in daily practice. Students apply the COPC principles and methods to data from their own communities.

4. Thesis / Master's Paper

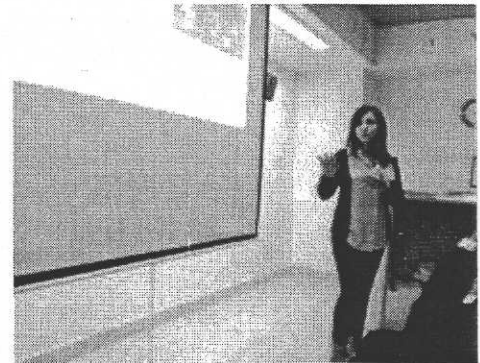
Students complete an individual, mentored Thesis or Master's Paper.

Thesis: Students in the thesis track collect and/or analyze data on a relevant public health topic or conduct detailed secondary analyses of an existing database. This track is open to students who achieve above-average grades in the first semester courses.

Master's Paper: Students who choose this track write a paper on a public health problem which is relevant to their country. The paper may comprise a detailed research project proposal, a program review, or an in-depth analysis of an emerging public health problem.

Theses and papers are submitted in writing and defended in an oral examination. Students in both tracks participate in the "Research Forum" in which the student's thesis or paper proposal is presented and peer-reviewed.

Thesis track students enroll in fewer elective courses than those in the Master's Paper track.



Master's Thesis Topics 2013-2014

- Predictive models of gender ratio at birth in China under the One-Child Policy
- Toenail heavy metal and trace element concentrations among Israelis and Palestinians and association with PON1
- Catastrophic out-of-pocket health expenditure in India
- Socioeconomic inequality and its association with maternal health service utilization in Kenya
- Determinants of breastfeeding practices in children aged less than 24 months in Nepal: a secondary analysis of the 2011 Nepal Demographic and Health Survey
- Current perception of physicians regarding the health care system in Israel
- Demographic and dietary predictors of urinary concentrations of phytoestrogens among adults in Israel
- Prevalence and determinants of cyber-bullying in Israel
- Cervical cancer incidence and trends according to ethnicity in Israel
- The effect of a quality improvement intervention on equity in maternal and newborn care practices in eastern Uganda: A quasi-experimental study
- Perceived social support and long-term mortality among survivors of first acute myocardial infarction in Israel

- Parent-of-origin effects on longitudinal change in BMI from adolescence to adulthood: The Jerusalem Perinatal Follow-up Study
- The impact of internal displacement due to armed conflict violence on social determinants of health: Colombia 2012

Master's Paper Topics 2013-2014

- Toward a "health promoting hospital" in Roosevelt Hospital, Guatemala
- Caring for illegal immigrants in the 'Promised Land'
- How to develop and implement a newborn screening program for Congenital Hypothyroidism in a lower middle income country: case of Cote d'Ivoire
- Health promoting hospitals in South Sudan
- A Lyme Disease education program for kindergarten children in Dutchess County, New York
- Safe childbirth in rural Cameroon
- Aspects of the polio vaccine campaign, Israel, 2013

The Academic Year – October-September

The academic year is divided into two semesters and a summer session. The first semester begins in October and ends in January-February, and the second semester ends in June. Exact start and end dates vary from year to year.

The summer session (July - September) is primarily devoted to work on the thesis/master's paper (including field work if necessary) and to a limited number of workshops and elective courses.

Course examinations are held in February and July, and the oral thesis/paper defense in September, prior to graduation.

Professional site-visits, social outings, cultural events, and lectures on current affairs and the history of the region take place throughout the year. Students join in the celebration of local religious festivals. Informal home visits facilitate contact with faculty members and other Israelis. Professional site visits are arranged to public health facilities across the country.

Comfortable on-campus dormitory facilities are provided for scholarship students (see below) and can be rented by non-scholarship students based on availability. Apartments can also be rented in close proximity of the campus.

Examinations and Grading

Course grades are based on written or oral examinations, papers, or student presentations, depending on the course. Students must obtain a passing grade of 60 in each course to be eligible to receive the MPH degree.

Message to the Potential Student

Having read this description of our program and what we regard as important, you should be in a better position to decide whether you are interested in applying for admission. If you feel that our Program will meet your professional/academic needs, read on.

Let us start with what we will try to provide you with:

- The fundamental principles of public health and community medicine through our curriculum in epidemiology, research methods, statistics, health administration and other core and elective courses. All these courses are conducted by faculty members with vast international experience, bringing a high level of expertise to the training program
- Practical experience in the application of these principles in the COPC workshop
- Practical experience in planning and carrying out a research project on a subject of your choice
- A rewarding and stimulating experience of studying in a foreign country and of meeting and working with people from different professional and cultural backgrounds and joining a global network of hundreds of public health professionals who have graduated the program

What we expect from you, or more accurately, what you should expect from yourself:

- A realistic assessment of your knowledge of English so that you are not handicapped by an inability to read material, write papers or participate fully and freely in class. We do not offer an English language course. If you do not have a very strong command of English you will not fully benefit from the course and you might be unable to successfully complete the requirements of the course.
- A firm intention to continue to work in the field of public health and social medicine in your own country and not just a desire "to get away for a while", or merely to collect another degree. You should have a clear understanding of why you want the degree and how you plan to use it.

Requirements for Admission

In order to be eligible for the Program the applicant should have an academic degree (BA/BSc, MA/MSc, MD) in medicine, dentistry, nursing, another allied health field, or in one of the basic biological or social sciences relevant to health from a recognized university. Diploma/Advanced Diploma degrees are not recognized as academic degrees by Hebrew University.

Applicants who hold only a bachelor's degree must have obtained an overall grade of at least 75% (GPA 3/4) in their undergraduate studies.

Practical experience in public health is taken into account as well as academic achievement.

Students must have a command of basic computing skills.

IMPH Program Costs

A limited number of scholarships are available for selected students from developing countries and countries in economic transition. These scholarships cover virtually all costs related to participation in the Program including tuition, living accommodations, basic living expenses in the form of a monthly stipend, medical insurance, social activities, administration costs, and some textbooks. **Airfare to and from Israel is not included in the scholarship**, but exceptional students may be eligible for a travel grant on an individual basis.

Scholarship support is not available for students from high-income countries. The cost of participation in the IMPH program for non-scholarship students is 100,000 New Israeli Shekels (NIS). All payments must be made in Israeli currency or foreign currency based on the official exchange rate on the day of payment. This sum covers tuition, administrative fees, social/cultural activities, and medical insurance. (Living accommodations are not included and cannot be guaranteed.)

For applicants from the United States:

Upon acceptance to the course you may be eligible (as of information available in October 2013) to apply for a Sallie Mae loan (<https://www.salliemae.com/>) to finance your education at Hebrew University (HU). Note that as a student in this program you are **not eligible for a Federal Loan.**

The HU Financial Aid office in New York (finaid@hebrewu.com) can provide assistance in guiding you through the process and answering your questions regarding **Sallie Mae** loans. This office is a Rothberg International School office, and although the International MPH Program is not part of the Rothberg School they will assist you with this loan.

The Hebrew University of Jerusalem
Rothberg International School
One Battery Park Plaza, 25th Floor
New York, NY 10004
tel: 212-607-8522 ; fax: 212-809-4183

Application Requirements

A non-refundable application fee of \$75 US is charged. A check for this amount made payable to "Hadassah Medical Organization" must be included in the application package. Students from developing countries and countries in transition are exempt from the application fee.

Application forms can be downloaded from our website:

<https://medicine.ekmd.huji.ac.il/schools/publichealth/En/Candidates/Pages/default.aspx>

<http://publichealth.huji.ac.il/>

Please include:

1. Completed and signed **application form.**
2. Copy of an **academic degree certificate and valid transcripts** (for all degrees).
3. Applicants from countries where English is **not** the language of instruction must present results of an **English language proficiency exam** from a recognized language-instruction institute. Applicants who have previously studied at an institution where English is the language of instruction do not need to submit proof of English proficiency.
4. **Medical report** attesting to the applicant's good health signed by a physician. Please note, medical insurance does not cover expenses arising from pre-existing conditions, dental care, eye care or routine gynecological procedures.
5. **Curriculum Vitae (CV)**

6. **"Personal statement"** or autobiography relating to the reasons for wanting to pursue a master's degree in public health.
7. **Letters of recommendation** from **3** senior academicians or professionals who can attest to the applicant's qualifications and ability to successfully complete the Program.
8. **A color photograph** on white or light background.
9. **Photocopy of a valid passport** Passport must be valid for at least 6 months from end of program.
10. **A letter from an employer** or future employer attesting to the intent to employ the applicant upon completion of the MPH degree is recommended.

APPLICATIONS MUST BE COMPLETE BY APRIL 30.
Incomplete applications will not be reviewed.
PLEASE DO NOT FAX OR EMAIL THE APPLICATION.

If you wish to submit by courier service, contact the Program Office for instructions.
It is also possible to submit the application at the nearest Israeli Embassy.
Be sure to provide a clear address, telephone number (including country code and area code), fax number and e-mail address on all you communications.

Program address:

International MPH Program

Hebrew University-Hadassah Joseph H. and Belle R. Braun

School of Public Health and Community Medicine

P.O. Box 12272

Jerusalem, Israel 9112102

Tel: 972-2-677-7115

Fax: 972-2-643-1086

E-mail: imph@ekmd.huji.ac.il

Website: <http://publichealth.huji.ac.il/en>

Link to registration: <http://grs.ekmd.huji.ac.il>



MASHAV
Israel's Agency for International Development Cooperation
Ministry of Foreign Affairs
Jerusalem

Dear Applicant,

Thank you for applying for a professional training program in Israel. In order for us to consider your application, please complete the enclosed form and return it to the nearest Israeli representative (embassy or other).

Please make sure that all the required information has been provided in detail. Please type your answers. This will facilitate the application process and enable us to make our decision in as short a time as possible.

Only candidates who are accepted will be notified by the Israeli representative.
 Thank you for your cooperation.

ESSENTIAL:

This application form must be TYPED IN THE LANGUAGE OF THE PROGRAM, and accompanied by the following:

- Completed and approved medical certificate form (attached).
- Certificate of language proficiency (If the language of the program is not your mother tongue or the official language of your country).
- Photocopy of the relevant highest academic degree obtained translated to the language of the program.
- A passport photo.
- Two letters of recommendation from present employers or relevant affiliation.
- These forms should reach the nearest Israeli representative at least ten weeks prior to the opening of the program.

FOR OFFICIAL USE ONLY

שגרירות/ נציגות ישראל במדינת _____ תאריך קבלת השאלון _____
 ראיינתי את המועמד/ת שם פרטי _____ שם משפחה _____ אישית/טלפוני _____
 הערכת המועמד/ת והתאמה לקורס: _____

שם	תפקיד	חתימה	חותמת השגרירות
----	-------	-------	----------------

- נא לשלוח עותק אחד במייל למש"ב ובמקביל לשלוח עותק במייל לשלוחה הרלוונטית. עותק קשיח יישאר בנציגות.
- שאלונים שלא ימולאו במלואם כולל חלק זה בעברית לא יטופלו.

**Passport
Photo**

1. General

Name of the training program _____

Name of training institution in Israel _____

Dates: _____ Language of the course _____

Financial arrangements:

Flight ticket will be paid by _____

Tuition and accommodation will be covered by _____

2. Personal Data

Surname _____ Given Names _____

Country _____ Citizenship _____

Religion _____ Passport No. _____

Date of Birth _____ Gender: Male / Female

Home address _____

Telephone (country code _____) (area code _____) Number _____

Cell phone (country code _____) (area code _____) Number _____

Fax _____ e-mail _____

3. Education

	Institute	Location	Year	Field of Expertise	Degree
Higher Education					
Academic Degrees: First					
Second					
Third					

4. Other studies / courses / seminars relevant to the program (Last 10 years)

Subject of course	Country	Organized by	Duration of studies	Year

5. Previous Studies in Israel

Subject of course	Year	Training Institute

Name of applicant _____

6. Computer Proficiency

No _____ Yes _____

If yes, please specify (Word, Excel, etc.) _____

7. Knowledge of languages

Mother Tongue _____

Language of the program	Reading			Speaking			Writing		
	Fair	Good	V. Good	Fair	Good	V. Good	Fair	Good	V. Good

8. Employment

Full Name of Institution _____

Type of Institution: Government / NGO / Private / Other _____

Address _____

Telephone _____ Fax: _____ e-mail _____

Present Position and description of your responsibilities _____

_____**9. Former places of Employment**

Name of Institution	Dates From-To	Position held

Name of applicant _____

10. References: Please list two people who are acquainted with your professional qualifications

Reference 1

Name	Position
Telephone number Country code area code number	Cell phone number Country code area code number
Fax number Country code area code number	e-mail address

Reference 2

Name	Position
Telephone Number Country code area code Number	Cell phone Number Country code area code Number
Fax Number Country code area code Number	e-mail address

DECLARATION

TRAINING PROGRAM _____ Date _____

I, the undersigned, Mr./Mrs./Miss _____ of (country) _____
in submitting my application for study and/or training in Israel as described earlier, declare as follows:

- (A) I UNDERSTAND that it is the intention of the government of Israel to enable me, if I should be found suitable, to participate in a period of study and/or training in Israel as part of the cooperation between the Government of Israel and my country.
- (B) I AM FULLY AWARE that the training opportunity given to me is designed for the benefit of my country's development. I, therefore, pledge to participate fully in all studies offered and to comply with all regulations established by the professional institution hosting the training program.
- (C) I CLEARLY UNDERSTAND that the purpose of my visit to Israel is to study and/or train. Therefore I will refrain during my stay in Israel from engaging in any political activity and/or gainful employment.
- (D) I AM FULLY AWARE that my stay in Israel may be discontinued if I should commit any infraction of my undertaking in this declaration, and/or of the Israel civil or criminal law, and/or break the rules and regulations of the school or institute where I will be studying and/or training.
- (E) I UNDERTAKE to return to my country upon the completion of my studies, as stipulated by the Government of Israel and the supervisors of my training program.
- (F) I UNDERSTAND that the Government of Israel cannot in any way be held responsible for the material needs of my family during my stay in Israel, nor for my employment upon my return to my country.
- (G) I AM FULLY AWARE that the legal, financial, and moral responsibility of the Government of Israel ends with the conclusion of the training program.
- (H) I AM - to the best of my knowledge - of healthy body and mind and do not require any medical treatment or attention.
- (I) I UNDERTAKE to submit to a further medical examination before or during my studies when required to do so by the Government of Israel.
- (J) I AM FULLY AWARE that the institute does not bear any responsibility whatsoever for my money, valuables, documents etc. Similarly, the institute bears no responsibility whatsoever for loss of money, valuables, documents, etc.
- (K) (FOR WOMEN) I AM NOT - to the best of my knowledge - pregnant, and I understand that I am liable to be sent home in case of pregnancy.
- (L) I UNDERSTAND that the organizers do not accept any responsibility for the treatment of chronic diseases, dental treatment or eye glasses during my stay in Israel.
- (M) I ALSO UNDERSTAND that my personal belongings are not insured by the organizers.
- (N) I HEREBY CERTIFY that all information and documents presented are correct and truthful.
- (O) I AM FULLY AWARE that it is my responsibility to obtain the name and location of the Israeli institute to which I am going, its address and how to arrive there.

(P) I UNDERSTAND that all the financial arrangements have been finalized with the Israeli Representative before my arrival in Israel.

(Q) I FULLY UNDERSTAND that, unless stated otherwise, the insurance policy under which I shall be insured by the Israeli institute covers me only during the period of the course/program within the area of the State of Israel.

I confirm hereby my full agreement to these conditions.

Name and surname of applicant _____

Signature of applicant _____

Date _____ **Place** _____

Please write a short paragraph describing your expectations from the training program including the direct contribution of the program to your field of work, as well as future plans after completion of the program.

Please write a very short autobiography

MEDICAL CERTIFICATE

Surname:	Given name (s):	Date of birth:	Gender:
----------	-----------------	----------------	---------

To be filled out by applicant:

Have you/ do you suffer from the following:	No	Yes	If yes, please specify
A Heart (Cardiovascular)			
B Hypertension			
C Diabetes			
D Epilepsy			
E Mental Disorders			
F Tuberculosis			
G Bronchial Asthma			
H Visual Disorders			
I Malaria			
J Sexually - Transmitted Diseases (Including AIDS)			
K Malignant Disorders (or other tumors)			
L Internal Bleeding			
M Have you undergone surgical procedures?			
N Have you undergone medical exams during this year?			
O Are you currently using any medications?			
P Are you currently pregnant? If yes, what month?			

I pledge to take all the medicine that I am currently using / will need with me during my stay in Israel.
I am aware that MASHAV will not be responsible for providing me with medicines during the period in Israel.

Applicant's Signature _____

Date _____

To be filled out by Family Physician/ Practitioner:

Has the applicant suffered/ suffering from the following:	No	Yes	If yes, please specify
A Heart (Cardiovascular)			
B Hypertension			
C Diabetes			
D Epilepsy			
E Mental Disorders			
F Tuberculosis			
G Bronchial Asthma			
H Visual Disorders			
I Malaria			
J Sexually - Transmitted Diseases (Including AIDS)			
K Malignant Disorders (or other tumors)			
L Internal Bleeding			
M Undergone surgical procedures?			
N Undergone medical exams during this year?			
O Currently using any medications?			
P Currently pregnant? If yes, what month?			
Q Gynecological Disorders			
Physical Examination: please specify	Normal	Abnormal	
R Blood pressure			
S Cardiac functions			
T Respiratory			
U Liver			
V Spleen			
W Lymph Nodes			
X Edema of legs			
Y Lab Tests:	ESR	HB/ HCT	WBC HIV Urine Glucose Urine Protane
Results:			
Z Physician's Conclusions/ General Remarks:			
Name of Physician:	Signature and Stamp:	Date:	

Annex to Medical Status Form

1. TO BE FILLED BY CANDIDATE'S PERSONAL PHYSICIAN

A. I confirm that Mr/ Ms _____ is personally known to me in a professional capacity as a patient since (date) _____.

2. As far as I know, and to the best of my professional knowledge:

Mark with X that which is appropriate

☐ As far as I can predict, there is no probability that the candidate will need medical treatment or any medical procedure during work and travel in Israel in the foreseeable future.

☐ As far as I can predict, there is some probability, that the candidate will need medical treatment or a medical procedure during work and travel abroad in the foreseeable future.

3. As far as I know and to the best of my professional knowledge:

Mark with X that which is appropriate

☐ As far as I can predict, the candidate is not a health risk to those around him / her.

☐ As far as I can predict, the candidate might risk the health of those around him / her.

Name of Physician :	Stamp and Signature :	Date:
---------------------	-----------------------	-------

Renunciation of Medical Secrecy: I, the undersigned, hereby give my permission to the Israeli Health Maintenance Organization and/or its medical institutions, as well as to all the doctors and other medical institutions and hospitals and/or to all the insurance companies and/or to every institution and other body or individual, to provide Harel Insurance Company Ltd and/or MASHAV (hereinafter "the Requestor") with all the details, without exception, and in the way that shall be demanded by the Requestor, as regards my state of health and/or any disease that I have suffered from in the past and/or that I am currently suffering from and/or that I will suffer from in the future, and I hereby release you from the obligation to safeguard medical secrets and hereby renounce this secrecy toward the Requestor. This Declaration of Renunciation binds me, my estate, and my legal delegates and everyone who will come in my stead. This Declaration of Renunciation shall also apply to the minors.

Name of Applicant:	Signature :	Date:
--------------------	-------------	-------